

LINCOLN HIGH SCHOOL

# Design Advisory Group Meeting Six

September 27, 2018



BORA

# Agenda

Welcome / Reminders	10 minutes	Erik Gerding
Interactive Design Exercise LHS Scavenger Hunt	70 minutes (45 minutes searching/25 minutes reporting)	Bora / All
Exterior Design Report Back & Discussion	20 minutes	Bora / All
Q&A and Upcoming DAG Meetings	10 minutes	Bora
Public Comment Period	10 minutes	All
Adjourn		

# DAG Charter



## Purpose and Role

The Design Advisory Group (DAG) will advise the Lincoln Modernization Project Team in developing a comprehensive, equitable, integrated and visionary school design with authentic school community engagement. The District's project team will work directly with the DAG to ensure that their concerns and aspirations are understood and considered. The DAG will be a part of the multifaceted design & stakeholder engagement process including District & school staff, students, parents, community members and the consultant design team. This process will include consideration of background guiding documents, building, site, budget and regulatory requirements that must be used in evaluating design options.

DAG members' role and responsibilities:

- Attend meetings to advise project team on school community concerns, issues, goals and aspirations.
- Abide by code of conduct for DAG.
- Report to and bring feedback from groups and organizations DAG members represent.
- Advise on effective communication strategies to reach entire school community for project process and public participation events.
- May assist project team with public open houses.
- May assist with groundbreaking and grand opening events.

## Project Scope

Following the passage of the 2017 capital bond program, PPS is moving forward with the planning, design and construction of a modernized Lincoln High School. Construction would begin in the summer of 2020.

## Membership

The design of Lincoln High School will consist of three primary phases: Schematic, Design Development and Construction phases. DAG members will be expected to serve approximately eight months throughout the programming, schematic design and design development phases. The design team may elect to inform DAG members of notable project changes after the design development phase.

Lincoln High School and District staff will select and appoint DAG members through an open application process. Additional applicants may be recruited to ensure a balanced and full representation of the school community.

The DAG will nominate a **Chairperson** or **Co-Chairpersons** to assist in DAG meeting agenda & presentation review, steering planning meetings and meeting protocol. *PPS staff/employees and Board members may not serve as Chairperson/Co-Chairpersons.*

The DAG should include at least one member from each of the following stakeholder groups: teachers, students, parents, middle school cluster parents, neighborhood association, business association, cultural associations, school program, existing and potential program and/or capital partners, alumni, the school principal and school board representatives.

Portland Public Schools is an equal opportunity educator and employer.

A member wishing to resign from the DAG shall do so in writing to the District's project manager; e-mail is acceptable.

If a member fails to attend two consecutive DAG meetings without reasonable excuse, or otherwise becomes unable to serve on the DAG, the District's project manager may declare the position on the DAG to be vacant and appoint another appropriate person to the DAG.

## DAG Meeting Schedule & Format

Estimated commitments include: Approximately eight DAG meetings, one public open house and one public workshop during the 2017-2018 school year, with other events possibly being scheduled for outreach. Timing of these events will be aligned with overall project schedule and other school and district stakeholder engagement.

Meetings are held during programming, schematic design and design development. DAG will be informed of significant project scope changes that may occur later in design and construction.

DAG meetings will be held at Lincoln High School unless noted otherwise.

DAG meetings are open to the public and provide an opportunity for public comment; meeting materials and meeting notes will be posted online.

An opportunity for public comment will be provided at the end of each meeting. Public comment will be limited to 10 minutes with a maximum of 3 minutes of testimony per person. Those wishing to provide testimony to the DAG will need to sign up at the meeting. Testimony will occur in order of arrival. Comment cards will be provided at each meeting. The public is encouraged to provide written comments to the DAG.

## Additional Public Participation Opportunities

Design workshops and open houses will be open to the wider school community as well as the general public. Everyone is encouraged to attend these events.

- The purpose of design workshops is to obtain public feedback on analysis, alternatives and decisions.
- The purpose of open houses is to inform the public on project process and progress.

## Field and/or building tours

A number of educational facility tours will be set up for DAG members prior to or during schematic design. These will be optional local (or regional) examples of middle/high school designs that can be used to inform discussions and broaden the knowledge base.

## Project Team

The project team will be comprised of architects, engineers, planners, the Office of School Modernization (OSM) project manager and department staff. They will provide agendas,

Portland Public Schools is an equal opportunity educator and employer.

Portland Public Schools is an equal opportunity educator and employer.



# DAG Code of Conduct

## Expectations Regarding Committee Member Behavior

- Make every effort to attend every meeting, to arrive on time, and to be prepared.
- If you know you must be absent, advise the committee support staff in advance.
- Do not criticize board members, staff members, other committee members, or any citizen in public. Letters and e-mails to any district personnel or elected official is a public document.
- Speak when recognized by the facilitator. Don't interrupt or engage in side conversations when another committee member is speaking.
- Be brief and to the point.
- Say what you mean and mean what you say: no political speeches; don't posture or grandstand.
- Clearly explain how you came to your position on a subject and how it serves the public interest.
- Share credit generously. Spread opportunities to get positive recognition.
- Support the legitimacy of committee outcomes, even those you don't agree with. When a decision is made, move on.
- Outside of committee meetings, members must be crystal clear whether they are speaking as an individual or have been recognized by the committee to speak on their behalf.
- Respect the different styles of fellow committee members.
- Be open to changing your mind based on new information.
- Take personal responsibility for encouraging respectful behavior among your fellow committee members.
- Recognize that you are seen as committee members at all times during the process, no matter how you may see yourself.
- Whenever you put anything in writing, assume that everyone in the city is looking over your shoulder.
- Everyone does not have to weigh in on every question. Sometimes it's OK to just be present.
- Affirm the dignity and worth of the services rendered by Portland Public Schools and maintain a constructive, creative and practical attitude toward PPS affairs and a deep sense of social responsibility as committee members.
- Recognize that the chief function of PPS at all times is to serve the best interest of all its students.
- Refrain from activities which undermine public confidence.
  
- Be respectful of all people at all times.

**Violation of these committee rules of conduct will result first in a written warning and may ultimately result in removal from the committee.**



# DAG Rules of Engagement

Participation limited to DAG members only

Public is invited to observe & comment at the end of the meeting

DAG is an advisory group, not a decision-making group

Respect the outcomes of prior Master Plan Committee & DAG processes



# Interactive Design Exercise: Scavenger Hunt

# Scavenger Hunt: Instructions

## WHAT:

Each group will search for interesting artifacts in and around the school that could be potentially used in the new high school.

## HOW:

Mark on the floor plan or aerial map where the artifact is roughly located. Create a legend numbering the artifact on the plan. Take pictures of the artifact.

One Bora person to join a group as photographer.

One person to mark the location of the artifact on map/floor plan.

**GROUP A** Lincoln High Grounds and Site

**GROUP B** Ground floor South & Basement

**GROUP C** Ground Floor North & Second floor

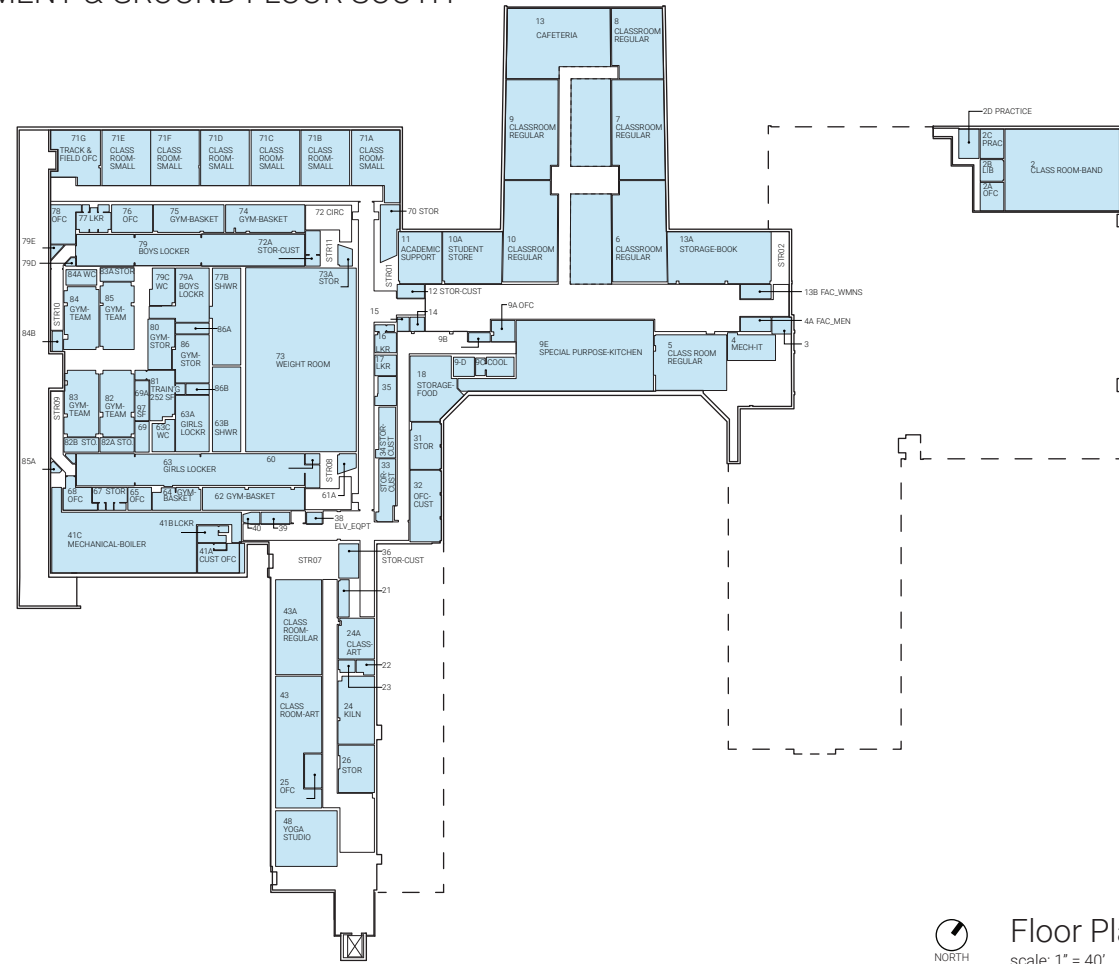
# Scavenger Hunt: Group A - Existing Aerial



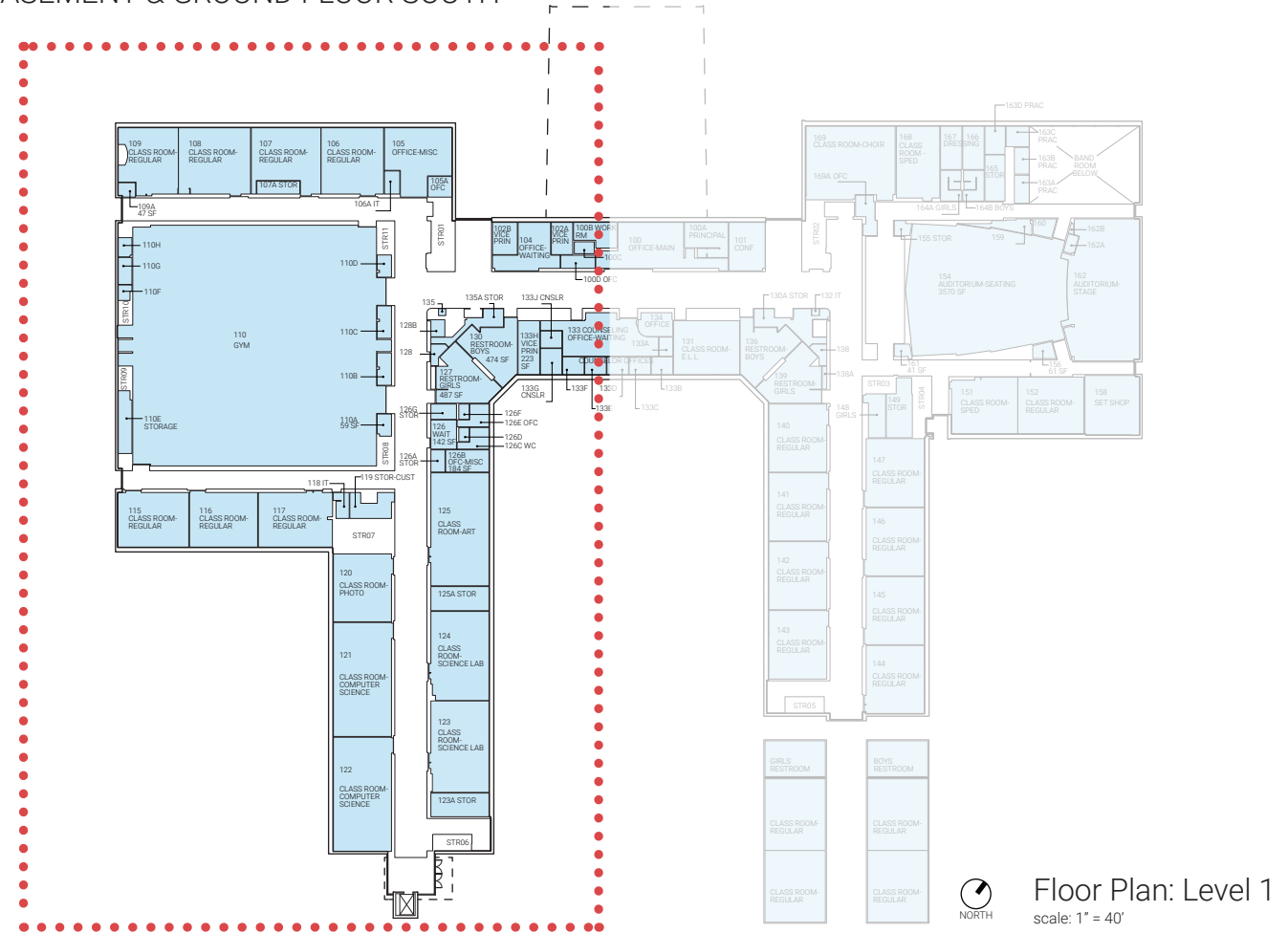


# Scavenger Hunt: Group B - Basement & Ground Floor Plan South

GROUP B: BASEMENT & GROUND FLOOR SOUTH

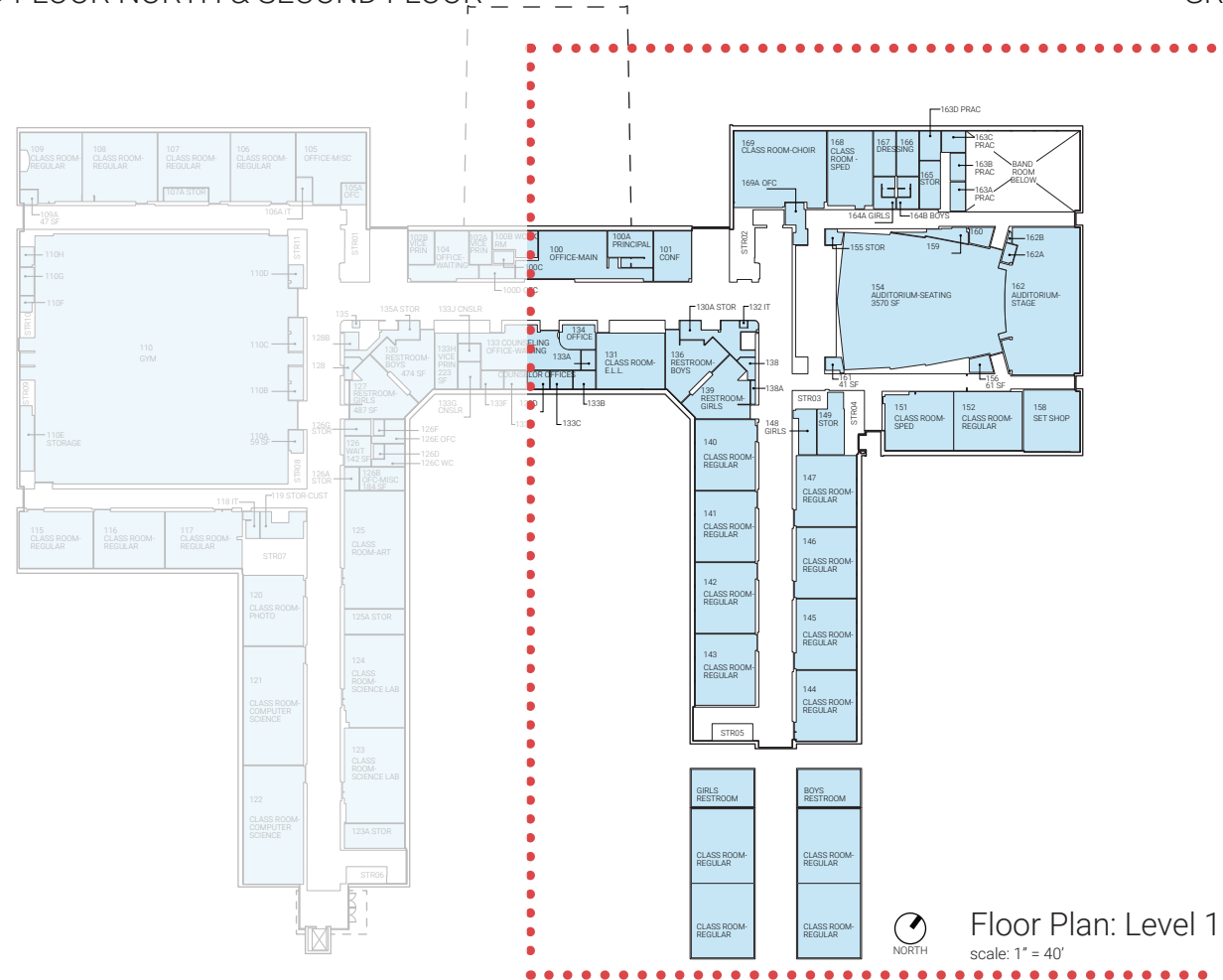


GROUP B: BASEMENT & GROUND FLOOR SOUTH

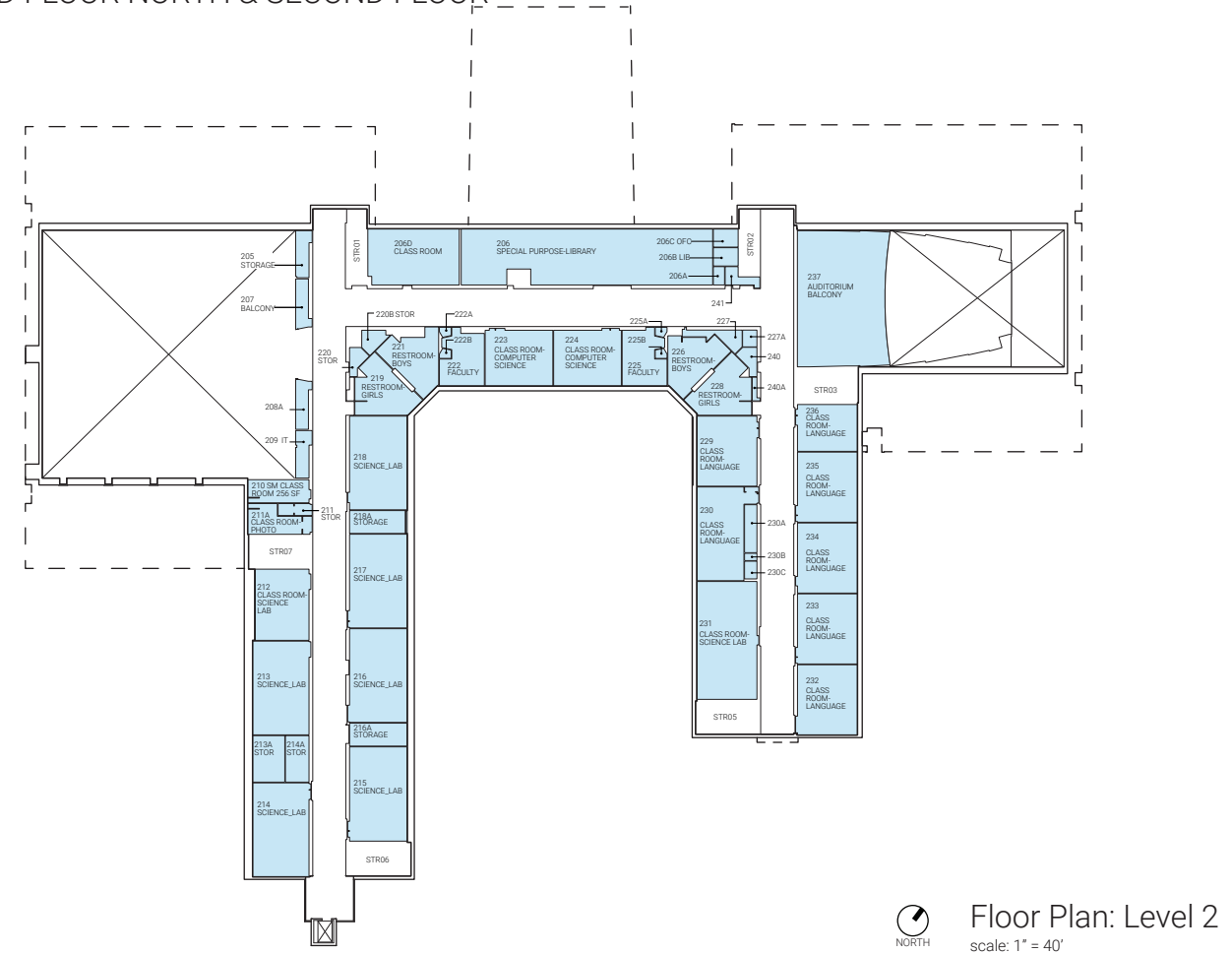


# Scavenger Hunt: Group C - Second & Ground Floor Plan South

GROUP C: GROUND FLOOR NORTH & SECOND FLOOR



GROUP C: GROUND FLOOR NORTH & SECOND FLOOR

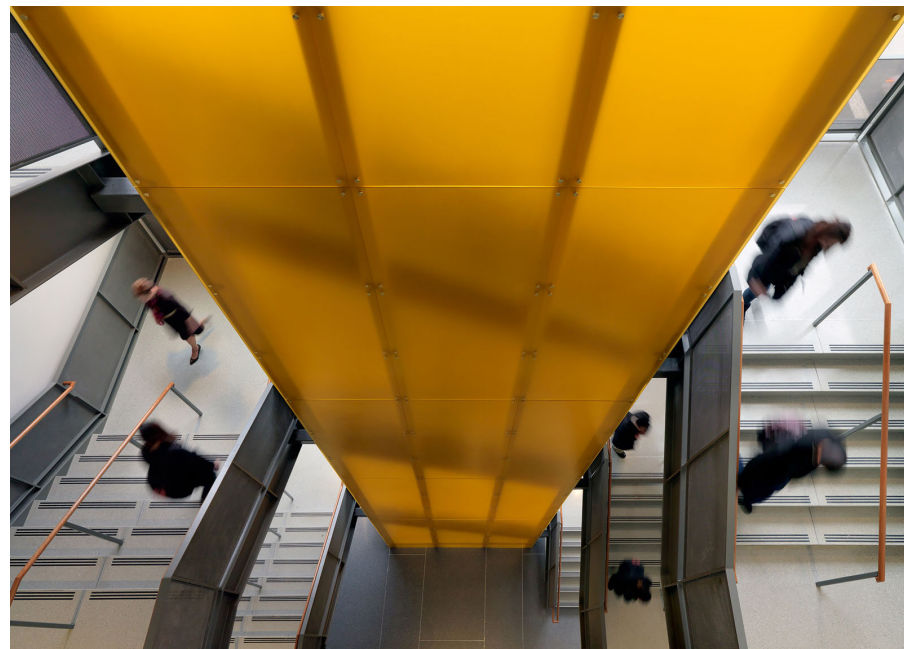
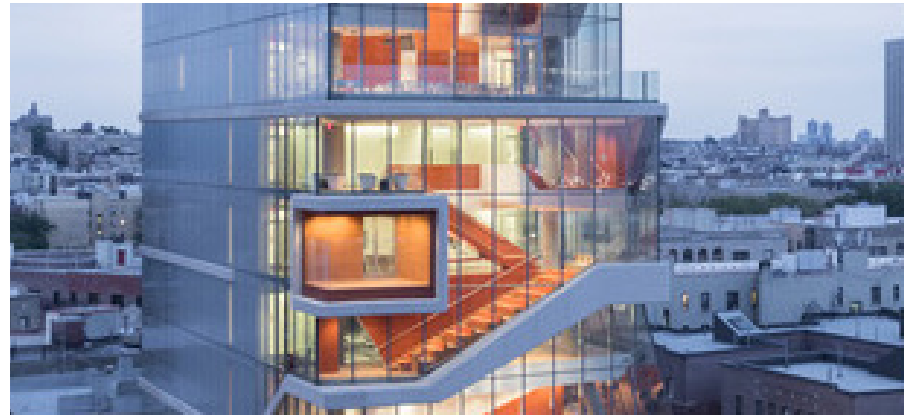


# Scavenger Hunt: Review Artifacts

# Exterior Building Character Report Back

# DESIGN GOALS

## Achieve a Visible Expression of Movement



# DESIGN GOALS

## Create an Active Urban Edge



# DESIGN GOALS

## Create a Cohesive and Singular Building Expressed in Form and Materiality

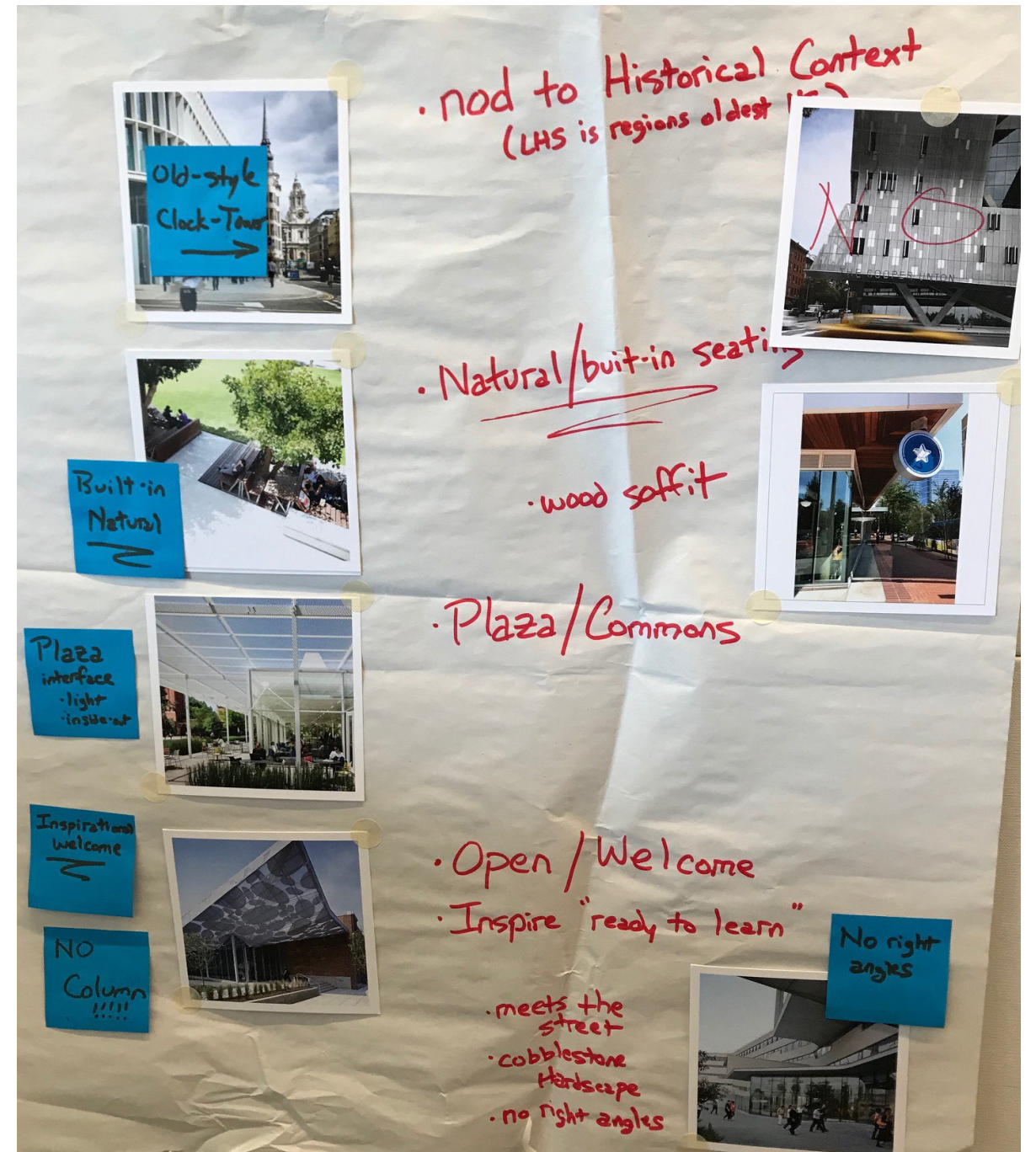
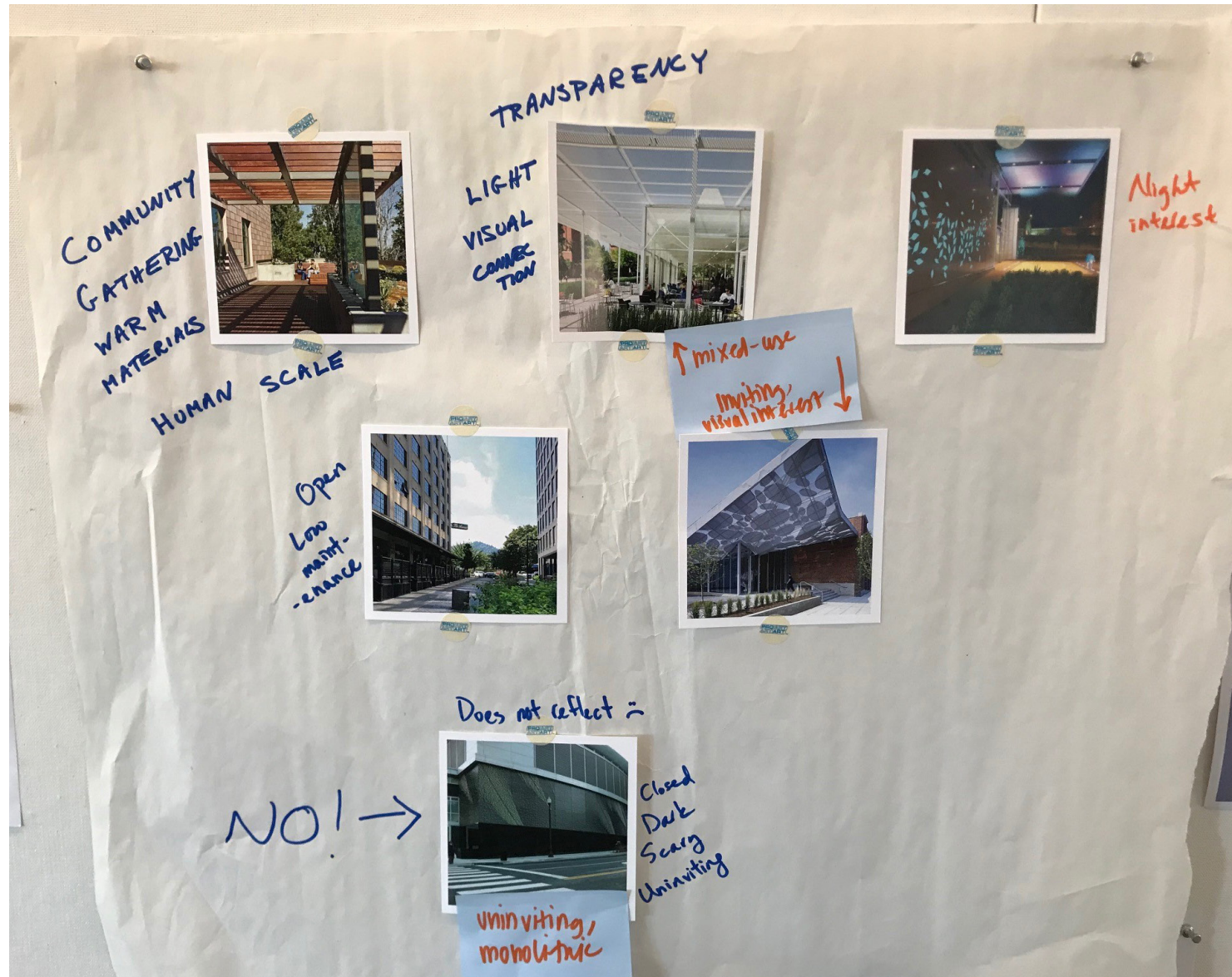


# Exterior Building Character





# Exterior Building Character: Public Realm



# Exterior Building Character: Urban Schools

- GLASS FOR SIGHT LINES
- REGULAR WINDOW SPACINGS
- OVERHANGS / VOLUMES
- LEVEL 1 GLASS FOR INVITING PUBLIC

- GRAND ENTRANCE / ATRIUM
- OPEN COURTYARD
- BRICK + GLASS

- PLAYFUL
- HINGED / PERMEABLE
- GRAPHIC
- EMBRACES STREET SPACE

- BREAK UP TOWER WITH OUTDOOR SPACES / MATERIALS / WINDOW LOCATIONS
- EXPOSED STRUCTURE
- HORIZONTAL ELEMENTS TO BREAK UP TOWER

- REGULAR W/ INTERESTING ITEMS THAT MAKE SENSE.
- TRANSLATES TO 7 story tower.

- DARK
- FORTRESS
- INSTITUTIONAL
- CONFORMIST
- BACKWARD LOOKING

NO!

- HORIZONTAL ELEMENTS TO BREAK UP TOWER
- TRANSLATES TO 7 story tower.
- BACKWARD LOOKING

- interesting windows
- lots of light
- fits right up to sidewalk

- Jenga tower twisted
- lots of windows
- openness for street
- low maintenance landscape

- Prison
- Cardinal Correction Facility

- We think this looks like the other side of the same building
- open
- spacious
- personality
- memorable

- NOT sure we like everything here
- elements of wood + water
- interesting architecture
- feels urban but warm
- non conventional shape

# Exterior Building Character Interactive Exercise: Comments

## Urban Schools

Soaring and inspirational

Dynamic facades that flow and face street

Glassy, ground floor

Warm tone, light color; Texture

Non-conventional shape

Express Circulation

Slight Angles/Shifts

Natural materials but still easily maintained

Horizontal elements to break up height

Regular windows but still playful

Full glass for views to city and West Hills

## Public Realms

Screen to Sky

Night Interest

Visually interesting

Transparency

Looks like it is occupied all the time

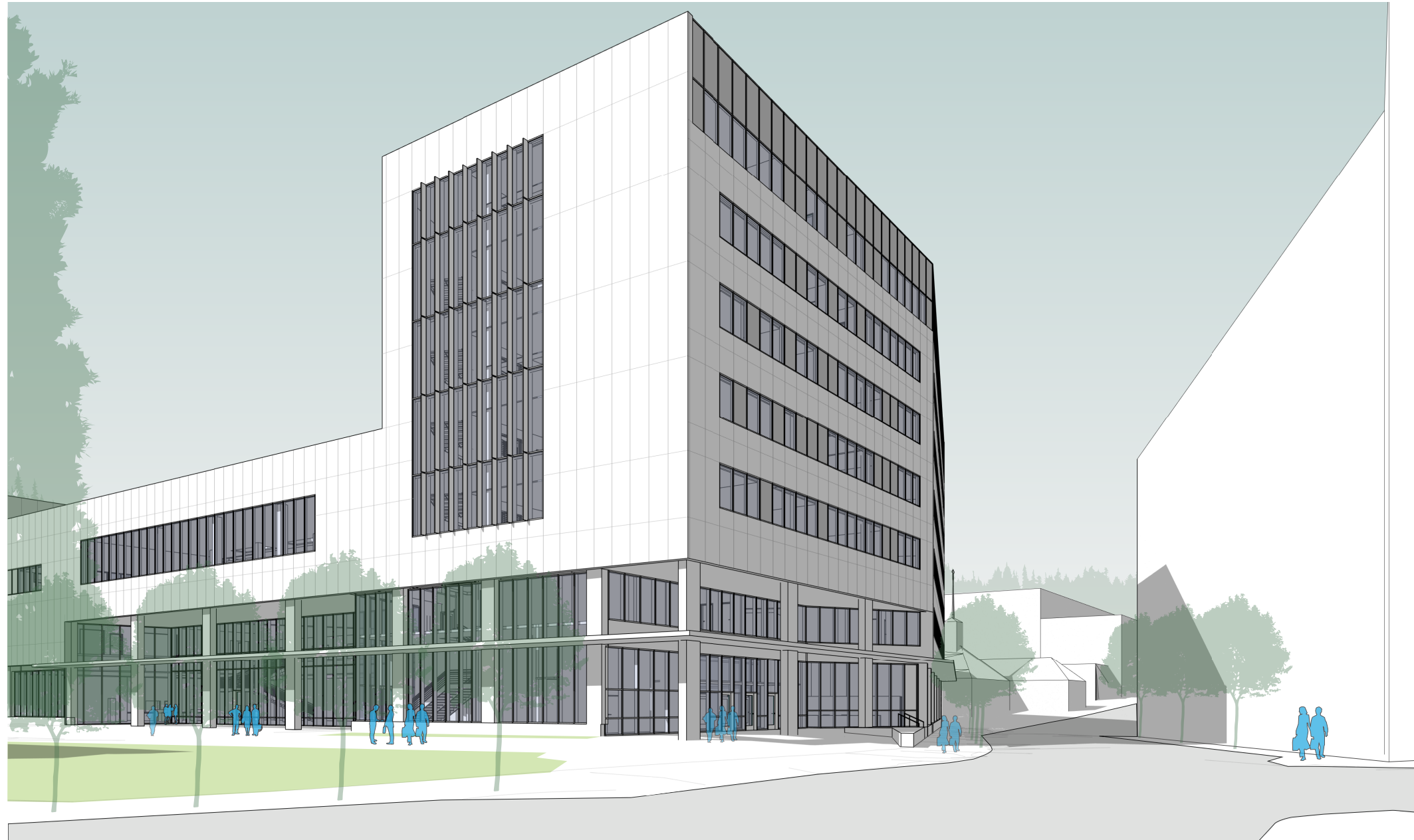
Students could be help make the facade perforated covering - not solid necessarily

A nod the history of Lincoln somehow - not literal

Bring the outside in and inside out; Commons in particular

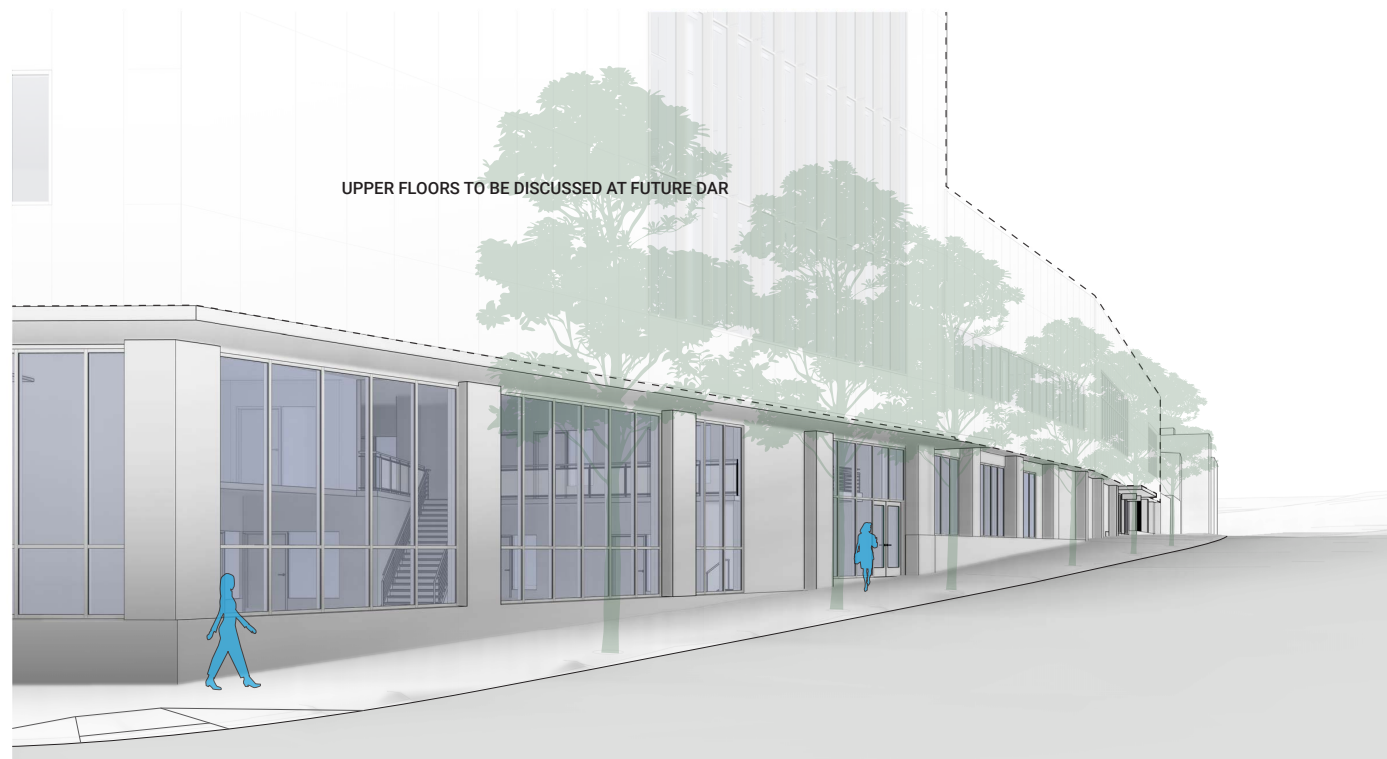
Opportunity to make a non-rectangular building because of the urban context

# Exterior Building Character: Front Door from Salmon Street

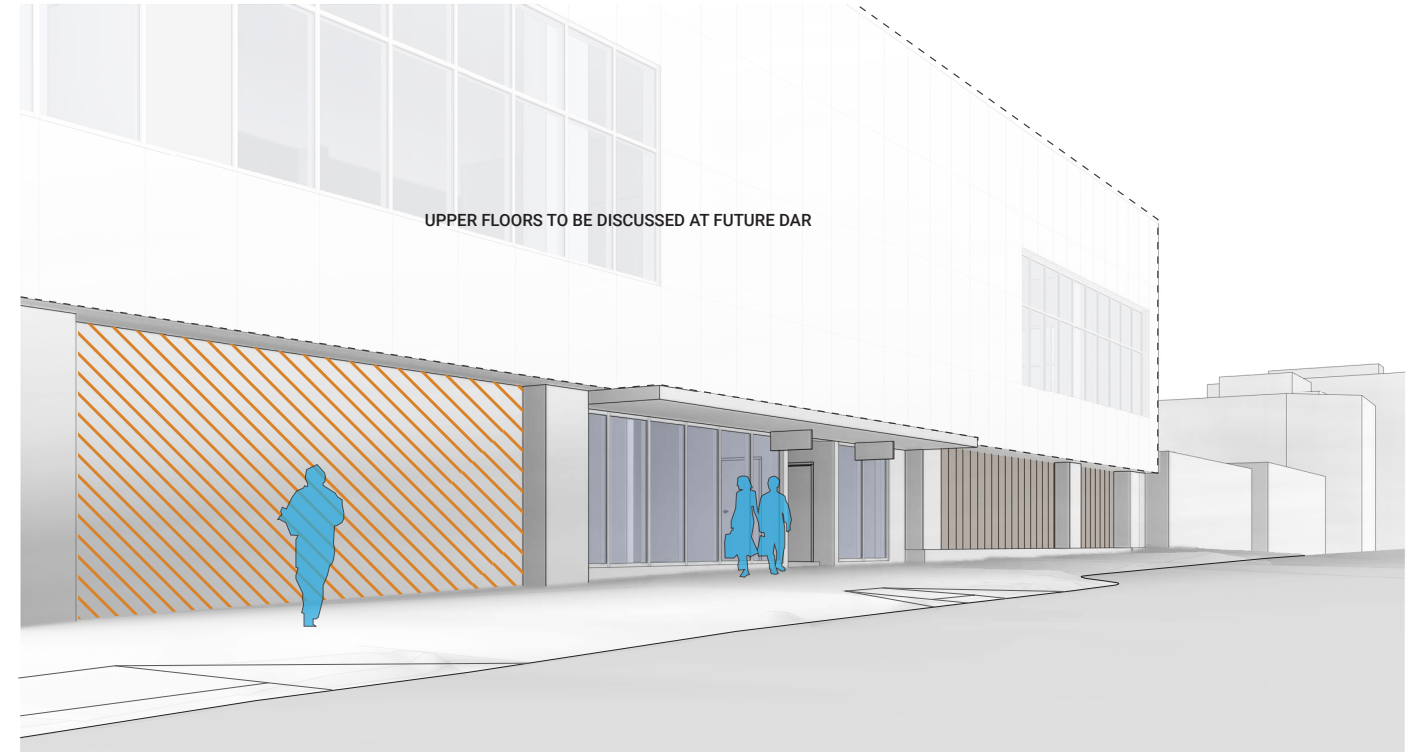


# Exterior Building Character: Urban Edge

West Elevation at Salmon St Corner Perspective Vignette



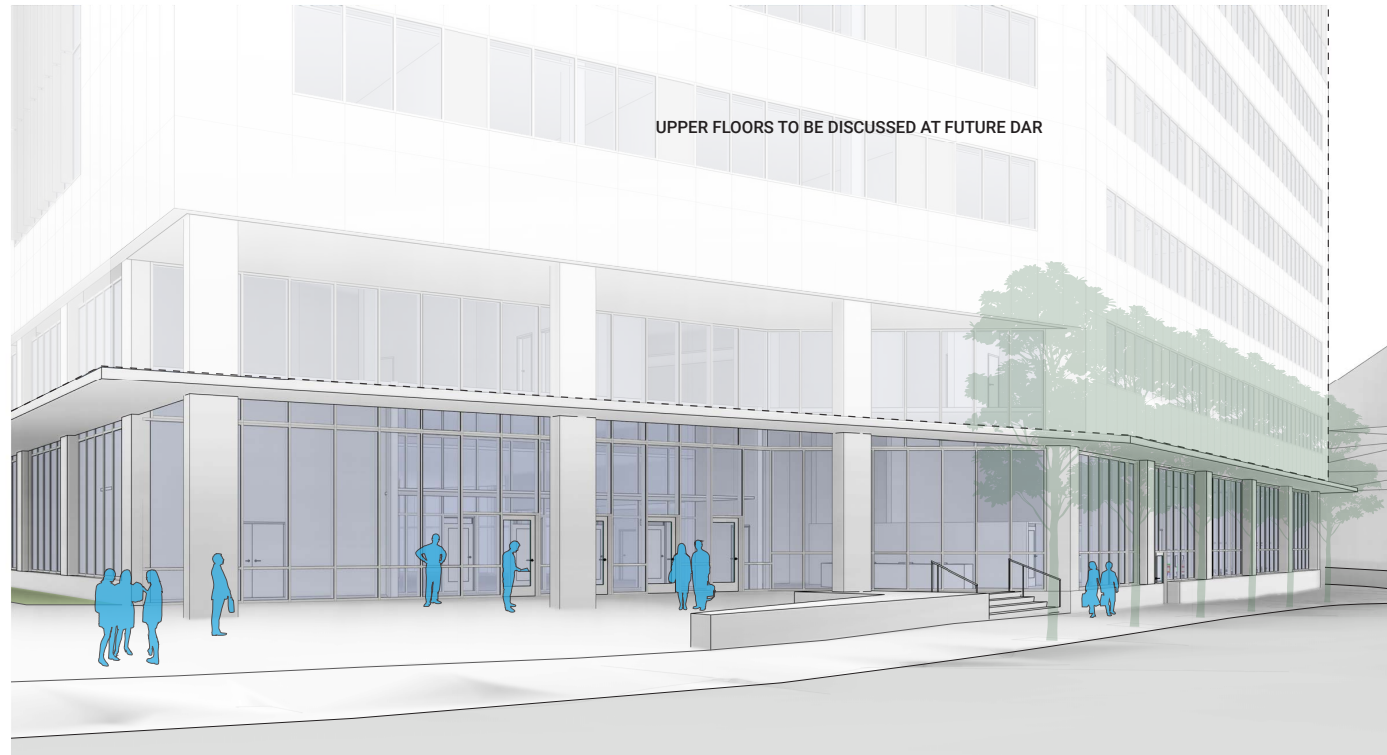
West Elevation Perspective Vignette



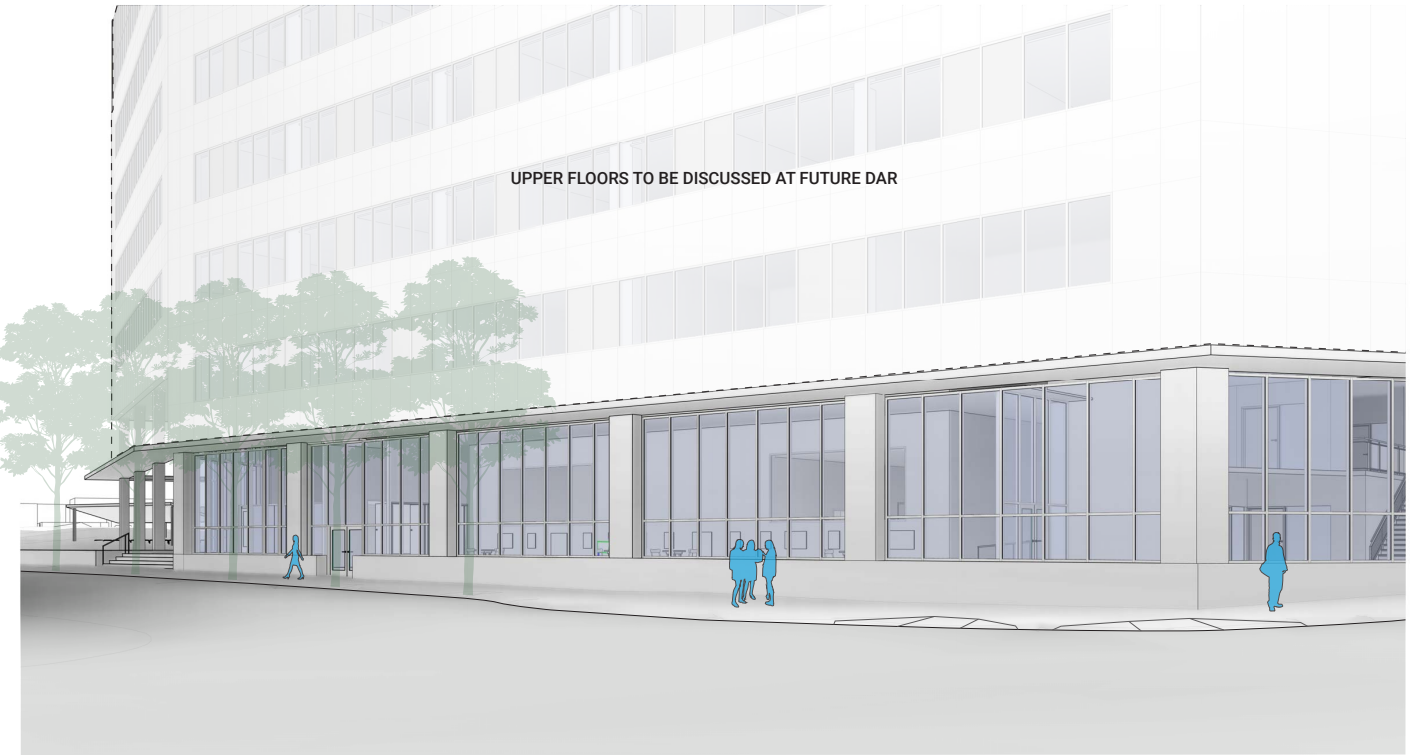
Views from 18th Avenue looking south-southeast

# Exterior Building Character: Urban Edge

North Elevation at Main Entry Perspective Vignette



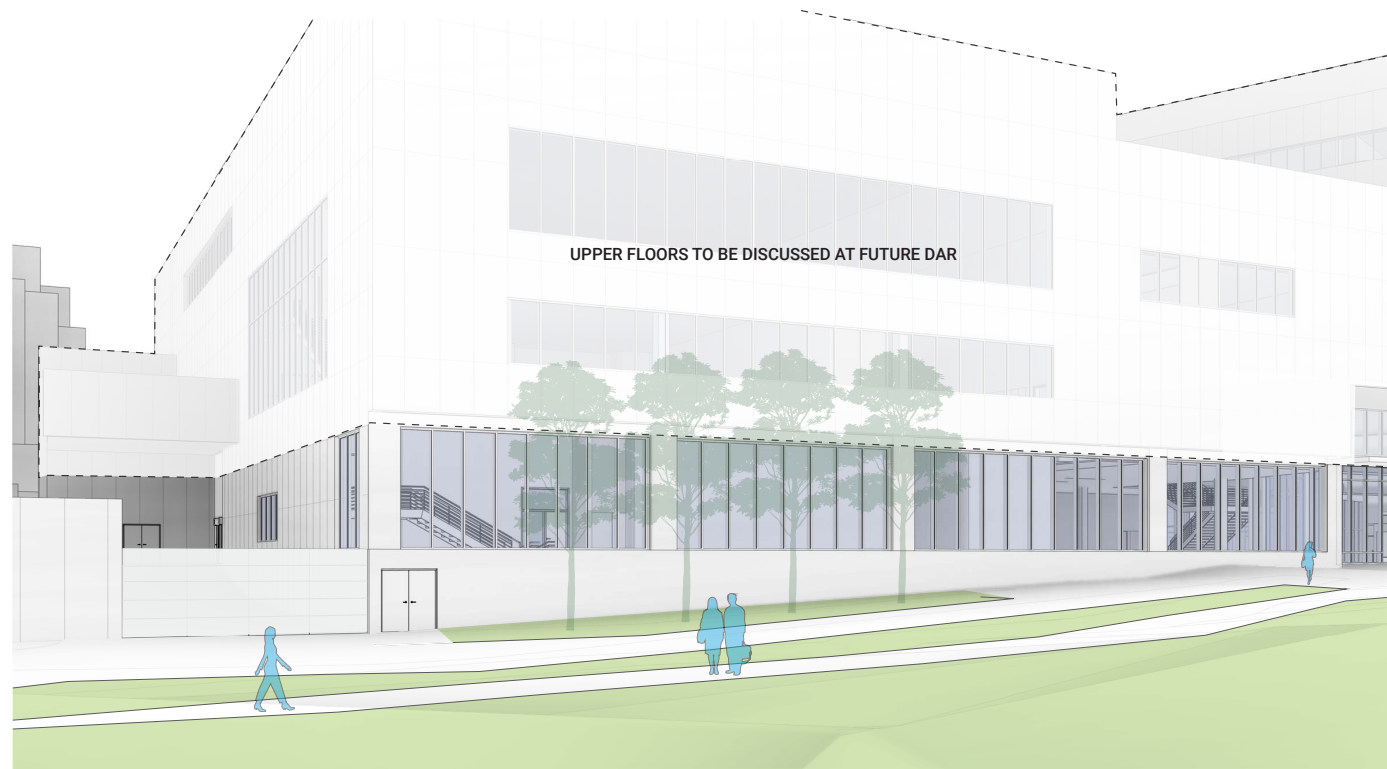
North Elevation Perspective Vignette



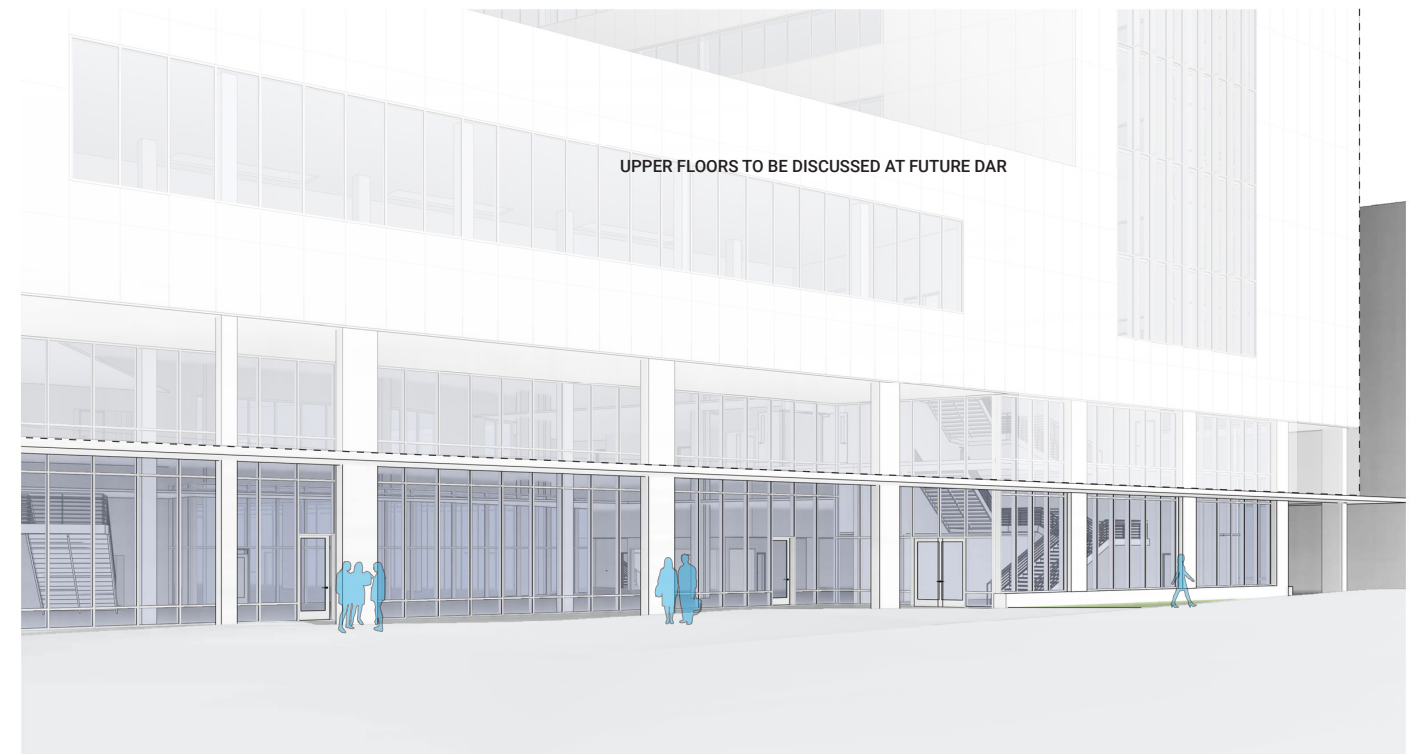
Views from Salmon Street looking south-southwest

# Exterior Building Character: Urban Edge

East Elevation at Gym Perspective Vignette

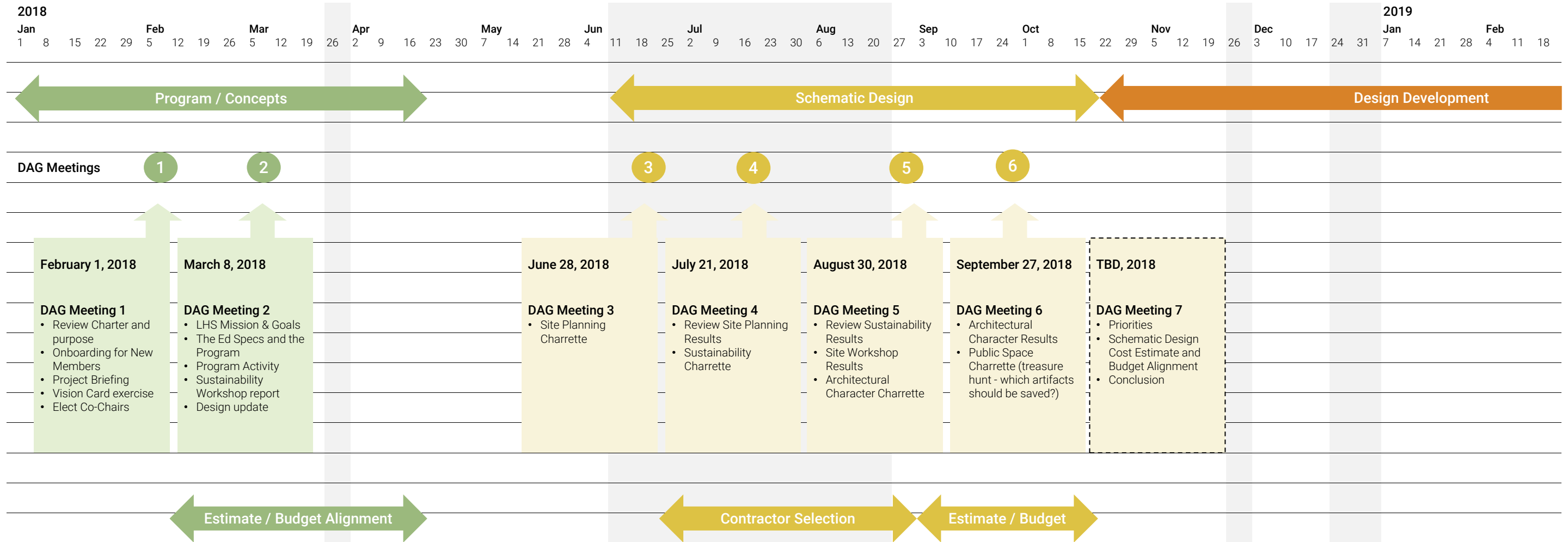


East Elevation Perspective Vignette



Views from Plaza looking west

# Upcoming DAG Meetings





# PUBLIC COMMENT

THANK YOU